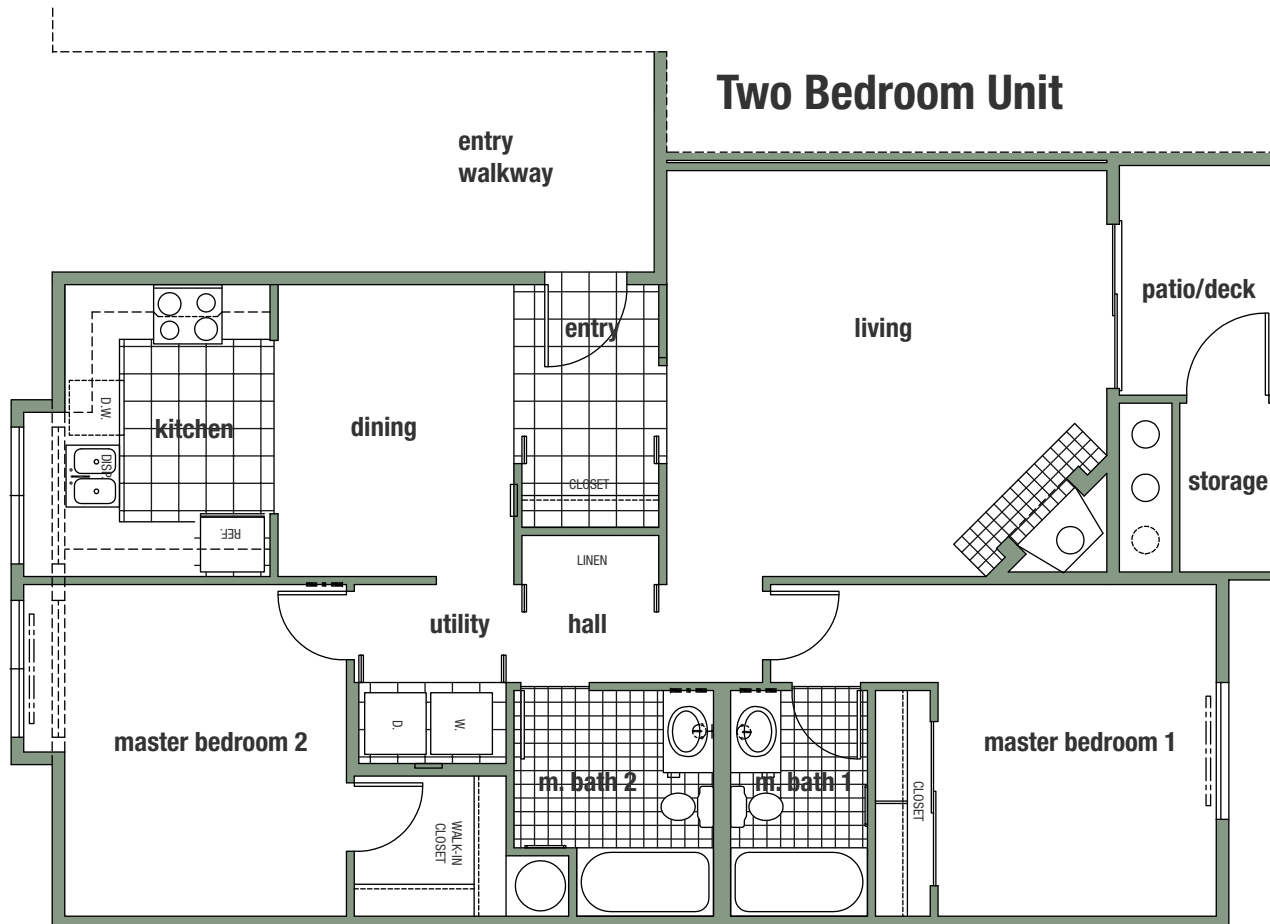


# Condominiums at SpringBrook Reserve

## Two Bedroom Unit



### Features:

- Hardwood flooring
- Fireplace with tile surrounds and accent wall
- Stained wood trim
- Maple cabinets in kitchen and bathrooms
- Brushed nickel hardware
- All tile splashes and tub surrounds
- Stainless steel kitchen appliances
- In home washer and dryer
- Heated storage
- Sprinkled deck

### Upgrades:

#### Kitchen:

- Granite kitchen counters
- Under-mount stainless kitchen sink
- Designer stainless kitchen valve

#### Bathrooms:

- Travertine bathroom counters
- Under-mount china sink
- Designer stainless valves
- Glass shower door

#### Misc:

- Dining light chandelier
- Dimmer light
- Wood blinds throughout

**Windermere**  
**OnSITE**  
**Builder Services Inc.**

In our continuing effort to improve the design and function of our homes, Seller reserves the right to modify or change plans, specifications, features and prices without notice. Renderings are artist's conceptions only. All dimensions and sizes are approximate. Variations of floor plans do exist. Interior surveyed square footage will vary from architect's square footage calculation. Patio areas, exterior parking and landscaping may change from artist's conception and are intended as a general reference only.

EO&E. All rights reserved. © Copyright 2006 Windermere OnSITE